



## Nevada City Cohousing

### Nevada City, CA

- A village-like 34-unit community located on 11 acres within walking distance of a historic "Gold Country" main street.
- The development also included breaking off seven single-family lots facing the street in keeping with Nevada City's traditional design, each with a small secondary unit.
- Clustering the Victorian-style buildings kept 60% of the wooded site undeveloped. The site layout minimizes grading and tree removal while optimizing solar orientation and handicap accessibility.
- Sustainable features include: net-metered photovoltaic solar systems that will provide most of the electricity for all units and the common house, and hydronic heat.
- Katie McCamant acted as project manager and developer and has lived in the community since its completion.
- Completed in 2006.







## PDX Commons Portland, OR

- PDX Commons is an urban senior cohousing community located on a .42 acre property in one of Portland's most walkable neighborhoods.
- (27) 1-3 bedroom condominium-style units with over 5000 square feet of common facilities, including rooftop gardens and patios.
- Katie McCamant assisted the community in putting together the development partnership with Urban Development & Partners (UD+P). She also assisted in building a realistic budget and cash flow as well as working with the local architect to facilitate programming and the schematic design process.
- As an active and social community, PDX Commons' shared goals highlight respect, nurturing, cooperation and optimism as core values.
- Completed 2017





## Swan's Market Oakland, CA

- Swan's Market Cohousing is North America's 50th Cohousing Community is preserved in the 1917 Swan's Market building in the historic Old Oakland neighborhood.
- This historic landmark is listed on the National Register of Historic Places and is part of an award-winning innovative mixed-used historic-preservation project, restoring an abandoned old market building with affordable rental apartments, a Cohousing community, retail, restaurants, offices and a courtyard.
- The site is split into 20 units. Community amenities include a 3,500 square foot common house with large kitchen and dining area, kids' play room, exercise room, laundry, workshop, community garden, guest room, large patio for dining/entertaining.
- Katie McCamant was the development consultant for the project.
- Completed in 2000







## Doyle Street Cohousing

### Emeryville, CA

- Doyle Street is the second cohousing community ever built in the US.
- It is home to 12 units on .3 acres of land in the Bay Area. Each unit ranges from 700-1,600 s.f. They all have cathedral ceilings with skylights, and wood burning stoves or fireplaces in the living room. Additionally, some have a small loft above the master bedroom and an extra storage closet above the other bedroom.
- Common facilities include a 2,000-square-foot common house with an industrial -strength kitchen, a children's playroom, workshop, and laundry room, a newly landscaped patio and garden, and a hot tub.
- The project reuses an existing brick industrial building with a new second story, and includes three townhouses in a new building.
- Katie McCamant was the founder, architect, and project manager for the entirety of the project.
- Completed 1992

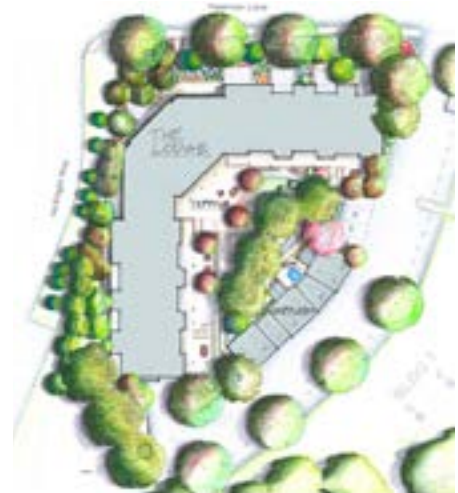




## Wolf Creek Lodge

### Grass Valley, CA

- Wolf Creek Lodge is senior cohousing consisting of 30 units on 0.9 acres, in an infill property which required rezoning. There is also 3.5 acres of forested open space. 1-2 bedrooms range in size from 591 s.f. to 1073 s.f. The 3,500 s.f. common house includes a dining room, gourmet kitchen, sitting area with fireplace, laundry, office, crafts rooms, and three guests rooms. Outside there are community gardens and a spa.
- Sustainability: many green-building techniques were incorporated in addition to its very walkable location allowing residents to walk to grocery stores and shops.
- The Project was financed through Buyer Investments and a private bank construction loan. At completion, the project received FHA Project Approval so that it qualifies for conventional mortgage financing and reverse mortgages.
- Katie McCamant & Jim Leach worked as the developers on the project.
- Completed 2012







## Germantown Commons

### Nashville, TN

- Germantown Commons is an intergenerational cohousing community of 25 households on 0.9 acres
- Members gather for meals, parties, meetings and other events in the 2,400 s.f. common house. This shared community space features a dining room, kitchen, living room with stone fireplace, screened-in porch, mail-room, laundry room, meeting spaces, and a playroom. Other amenities include two furnished guest rooms and full bath, which residents may reserve.
- Small, energy efficient homes, rain gardens, and edible landscaping top the list of sustainable features.
- Katie McCamant provided development consulting services.
- Completed 2015







## Hearthstone Community

### North Denver, CO

- The Hearthstone Community is located within a new urbanist redevelopment in the historical North Denver neighborhood, Highland Gardens, developed by Jonathan Rose Companies, creating the “middle housing” between single family houses and apartment blocks.
- This intergenerational community consists of 33 townhome condominiums with a 4,800 square foot common house on a 1.6 acre site. The common house looks over a shared pocket park, and the homes and common house front the street for a “friendly” interface with the neighborhood.
- The community is a 10-minute drive or 30 minute bike ride from downtown Denver.
- Katie McCamant provided site planning and common house design services for the Wonderland Hill Development Company Project.
- Completed: Fall 2001







## OakCreek Community

### Stillwater, OK

- Senior cohousing community of 24 private homes and extensive common facilities developed on 5.4 acres of a 7.5 acre site near Boomer Creek, walking/ biking trails, activities as Oklahoma State University, and downtown Stillwater.
- Incorporating the existing single family home, the 3,700+ s.f. common house supplements the private houses and encourages community gatherings. Facilities include: large dining room and kitchen, sitting room, crafts room, guest rooms and caregiver unit, and community terrace.
- Sustainable design features include: maximum daylight in houses, geothermal heating/cooling systems, reuse of runoff for landscape irrigation, environmentally friendly building materials throughout, and more.
- Katie McCamant provided development consulting services including structuring investment and securing construction financing.
- Completed 2012.







## Quimper Village

Port Townsend, WA

- Quimper Village is a senior cohousing community, located in Port Townsend on a 6 acre infill site. The community consists of 28 single-story townhomes, both tri-plexes and quad-plexes.
- In addition to the common facilities, other shared amenities include a bike barn, workshop, and community garden.
- CoHousing Solutions provided development consulting services, including securing construction financing and contractor selection.
- Completed 2017.







## Ravens' Roost Cohousing Anchorage, AK

- Ravens' Roost is an intergenerational cohousing community consisting of 35 homes of 1-4 bedrooms developed on 6.3 acres on one of the last infill parcels in Anchorage. The community includes a 12-unit atrium building with a covered "street" between the houses, as well as townhouse buildings.
- Less than a mile from an elementary, middle and high school and across the street from a park, the location is an ideal family-friendly neighborhood. Shopping and restaurants are only 1/2 mile away and the nearest ski hill is a mile away.
- Katie McCamant provided development consulting including working out the relationship with a local builder/developer who helped with securing financing.
- Completed 2017.



### Awards

Alaska Chapter of the American Planning Association,  
Best Practices Award 2017

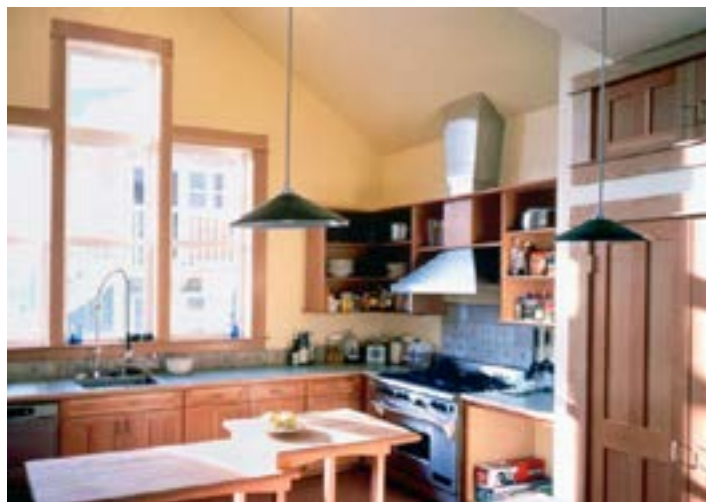




## Bellingham Cohousing

### Bellingham, WA

- Bellingham Cohousing is made up of 33 units on a 5 acre site.
- the 33 units range in size from a 780 s.f. 2 bedroom flat, to a 1,550 s.f. 4 bedroom duplex. Unit styles include flats, townhomes, and duplexes. The 4,800 s.f. common house has a kitchen, dining room, kid's rooms, and meeting rooms. Other shared amenities include a workshop, playground, hot tub, and vegetable garden.
- Clustering the homes on the northern portion of the site allowed for wetlands to steward the south. Connelly Creek runs through the southern boundary of the property.
- Katie McCamant was one of the common house architects, and assisted with project management.
- Completed in 2000







## Berkeley Cohousing

### Berkeley, CA

- Berkeley Cohousing is comprised of 14 units, on 3/4 acre in downtown Berkeley.
- Berkeley Cohousing is a case of creative renovation, coupled with new construction. There were 7 existing homes on the site, all of which were in need of significant renovation. All the units vary in size.
- Shared amenities include a 2,000 s.f. common house and large central lawns/courtyards.
- Berkeley Cohousing has won awards from the US Department of Housing and Urban Development as well as the American Institute of Architects.
- Katie McCamant acted as the project manager for the duration of the project.
- Completed in 1997.







## East Lake Commons

Atlanta, GA

- East Lake Commons is a Cohousing Community made up of 67 units, and built on 20 partially wooded acres located 4 miles east of downtown Atlanta. The expansive site includes a 3 acre garden, an orchard, greenhouse, and barn.
- Katie McCamant acted as the development consultant for the project.
- Completed 2001







## Heddelestone Village

Nelson, BC

- Heddelestone Village (previously known as Nelson Cohousing) is a multi generational community consisting of 24 duplex style homes (12 buildings) located on a 5.9 acre property. The community is located just 8.9 miles outside of downtown Nelson.
- Houses range between three different sizes: 830 s.f 2 bedroom, 1,00 s.f. 2 bedroom, 1,400 s.f 3 bedroom. Shared Amenities include a 4,700 s.f. common house, a 1 acre farm, children's playground, sauna, and chicken coup.
- Katie McCamant acted as the development consultant for the duration of the project.
- Completed in 2014







## La Querencia

Fresno, CA

- La Querencia is a 28-unit community located on a 2.8 acre site on Alluvial Avenue between Chestnut and Willow Avenues, located near an elementary school and a short walk from a park and retail areas.
- Home sizes include 2-bedroom flats and townhomes with 3, 4 and 5 bedrooms. Shared amenities include a 4,023 s.f. common house, pool, exercise room, teen hangout, workshop, and gardens.
- It is designed with active/passive cooling/heating techniques to dramatically reduce monthly utility bills. Super insulation, radiant barriers, and highly energy efficient windows keep homes cool in summer and warm in winter.
- Katie McCamant acted as the developer for the duration of the project.
- Completed in 2008.







## Liberty Village

Libertytown, MD

- Liberty Village is an 18 home community settled on 8 acres near Frederick, Maryland.
- The 18 units vary between three different sizes: 975 s.f. 2 bedroom 1 bath, 1,282 s.f. 2 bedroom 1.5 bath, and 2,000 s.f. 2 bedroom 1.5 bath.
- Shared amenities include a garden, chicken coup, playground, goat pen, and a swimming pool.
- Katie McCamant acted as the development consultant for the project.
- Completed 2006



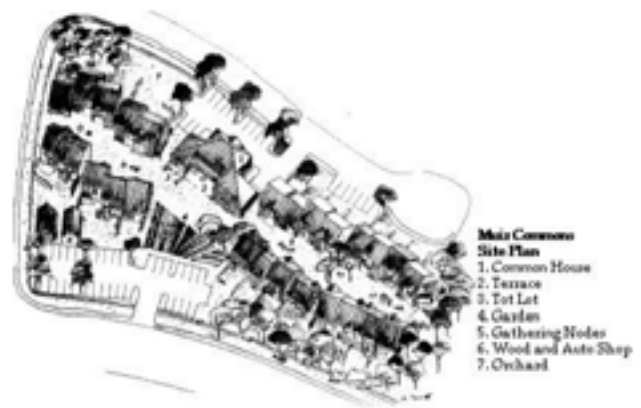




## Muir Commons

Davis, CA

- The first US cohousing community.
- Muir Commons is made up of 26 homes on just under three acres. Each individual house includes complete kitchens and private yards. Houses come in three models ranging from 808 s.f. to 1381 ss.f.
- The 3,668 square foot common house includes a large kitchen and dining area. Other features include a sitting room with a fireplace, a children's playroom, an exercise room, a recreation room, an office, laundry room, and a guest room. Other shared facilities include a 900 square foot woodworking and automotive shop, parking areas, bicycle sheds, and a hot tub.
- Katie McCamant acted as an architect for the project.
- Completed 1991







## Pleasant Hill Cohousing

### Pleasant Hill, CA

- A 32 house community built on 2.2 acres in the Bay Area
- The 32 homes range from 640 s.f 1 bed 1 bath units to 1579 s.f. 4 bes 3 bath units. The 3,835 s.f. common house contains a large kitchen/dining room, kids rooms, guest rooms, laundry units, and craft rooms.
- Other shared amenities include a pool/hot tub, patio, workshop, bike shed, play ground, and organic garden.
- Sustainable features include: passive heating and cooling fixtures, Polar Ply radiant barriers, shared water heaters, low-flow fixtures, FSC-certified wood, Low-VOC materials.
- Katie McCamant acted as the developer, and project manager.
- Completed in 2001







## Southside Park Sacramento, CA

- Southside Park Cohousing is comprised of 25 units on 1.25 acres in the heart of central Sacramento.
- Each home ranges in size. Some existing homes were renovated and turned into multi-family residences, and some new homes were built to create the community.
- Shared amenities include a 3,000 s.f. common house, a central lawn, garden, play structure, workshop, and bike storage.
- Southside Park was created with the intention of incorporating affordability for low income housing, and ethnic diversity.
- Katie McCamant acted as the consulting architect for the duration of the project.
- Completed 1993.







## Temescal Commons & Temescal Creek

### Oakland, CA

- Temescal Commons and Temescal Creek are small retrofit communities about 10 block apart from each other, in an older North Oakland neighborhood. In total, there are 16 units, but that number grows and shrinks depending on adjacent properties that join or leave the communities.
- By purchasing single family house lots, retrofitting existing homes, adding new buildings, and knocking down fence, we were able to create cohousing in an established neighborhood that has no land to accomodate a larger new development.
- Because of the retrofitted nature of the units, they all range in size and design.
- There are 800 s.f. of common facilities, including a small common house.
- Katie McCamant acted an architect and development consultant for both projects.
- Completed in 2000.







## Touchstone Cohousing

### Ann Arbor, MI

- Touchstone Cohousing is made up of 34 units. It sits on a piece of the 35 acre plot shared between Ann Arbor's 3 cohousing neighborhoods (Touchstone, Great Oak, and Sunward).
- More than half of the 35 acres owned by Ann Arbor's three cohousing neighborhoods are preserved in a natural state with two ponds, a greenbelt of native plants and prairie, plus a woods.
- Units range from 500 s.f. to 1,800 s.f (not including basement space).
- Katie McCamant acted as a design architect for the project.
- Completed 2005

